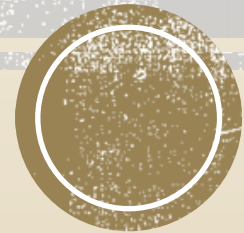




2024-25 COURSE SELECTION INFORMATION
JHS CLASS OF 2028





MEET YOUR JHS COUNSELORS

- A-CN Ms. Blanco
- CO-G Ms. Veliz
- H-L Ms. Eller
- M-PE Ms. Bentley
- PF-S Ms. Beverly
- T-Z Ms. Marshall

- College/Career Ms. Stillinger

*Counselor splits are determined at the start of the year and vary based on student enrollment.





GRADUATION REQUIREMENTS

22 Foundation Credits

+ 4 Endorsement Credits

= 26 Total Credits



THE 5 ENDORSEMENTS



STEM (Science – Technology – Engineering – Math)



Business & Industry



Public Services



Arts & Humanities



Multidisciplinary Studies



ENDORSEMENT PATHWAYS

PUBLIC SERVICE ENDORSEMENT

Option 1: Public Service CTE

Complete three (3) or more courses for four (4) or more credits within the same CTE Program of Study related to Public Service. One of these courses must be from level 3 or 4.

OR

Complete three (3) or more courses for four (4) or more credits in a TEA designated program of study related to public services.

- Clinical Rotations
- Cosmetology and Personal Care Services
- Dental Assisting
- Emergency Medical Technician
- Family and Community Services
- Law Enforcement
- Legal Studies
- Medical Assistant
- Medical Assistant Dual Credit
- Pharmacy Technician
- Teaching and Training
- Teaching and Training Dual Credit



CHOOSE ONE ENGLISH COURSE:

English 1 Academic

English 1 KAP (Katy Advanced Placement)

English 1 KAP/GT (Course for GT students)



CHOOSE ONE MATH COURSE:

Algebra 1

Geometry (Only if you took Algebra 1 in 8th grade)

Geometry KAP (Katy Advanced Placement)

Geometry KAP/GT (Only for GT students)

Algebra II (Only if you took Algebra 1 and Geometry in junior high)

Algebra II KAP (Katy Advanced Placement)

Algebra II KAP/GT (Only for GT students)



CHOOSE ONE SOCIAL STUDIES COURSE:

World Geography

World Geography KAP (Katy Advanced Placement)

AP Human Geography

AP Human Geography (GT students will take this course)

GT Students: If you take World Geography KAP over the summer, you will be exited from GT for Social Studies.



CHOOSE ONE SCIENCE COURSE:



Biology



Biology KAP (Katy Advanced Placement)



Biology KAP/GT (Only GT students)



CHOOSING COURSES: P.E. & FINE ARTS

Student-athletes must choose only one athletics program during online course selection. For multi-sport athletes, you will select the sport that comes first in the school year, and then coaches and counselors will work together to move students to their 2nd sport once the 1st sport season is over.

Students can enroll in both a Fine Arts course and a PE/Athletics course during the same year.

Band/Color Guard/Dance do have a PE credit option (talk to your director and/or counselor to make sure course code is correct!)



CHOOSING A FOREIGN LANGUAGE:

Students will need 2 years of Level 1 and Level II of a foreign language. If you are taking Spanish 1 in 8th grade, you will take Spanish 2 in 9th. Spanish for Spanish Speakers 1 and 2, you will take Spanish for Spanish Speakers 3 and 4.

Some students can wait to take their foreign language in 10th grade if they have not started in the 8th grade.



GRADUATION REQUIREMENT: HEALTH

Students must take:

Health (semester)

Principles of Health Science (Medical pathway)



GRADUATION REQUIREMENT: SPEECH

Students must take in the 9th grade:

Leadworthy (semester)

Debate 1

Theatre 1 (Fulfills Fine Arts and Speech)



SAMPLE 9TH GRADE COURSE SELECTIONS

- 1. English 1
 - 2. Algebra 1
 - 3. World Geography
 - 4. Biology
 - 5. Elective
 - 6. Elective
 - 7. Elective
- Possible elective choices:
 - World Language Course
 - Athletics or PE Course
 - Fine Art Course
 - Health (sem) and Leadworthy (sem)
 - Course aligned with student interest/strength

***Students should try to take courses that fulfill the graduation requirements so there is room in their schedule later in high school.



Jordan High School - Incoming 9th Graders

Course Selection List 2024-2025 (as of 1.11.24)



ENGLISH		End	Adv
0101	English I (9-12)		
0141	English I KAP (9-12)		
0143	English I KAP/GT (9-12)		
MATHEMATICS		End	Adv
0211	Algebra I (9-12)		
0223	Geometry (9-12)		
0251	Geometry KAP (9-12)		
0252	Geometry KAP/GT (9-12)		
0261	Algebra II (9-12)		
0253	Algebra II KAP (9-12)		
0254	Algebra II KAP/GT (9-12)		
COMMUNICATIONS & SPEECH		End	Adv
153	Debate (9-12)	B	
JOURNALISM		End	Adv
1640	Photojournalism (year) (9-12)	B	
1610	Journalism (9-12)	B	
162	Adv Journalism Yearbook (9-12)	B	3rd
163	Adv Journalism Newspaper (9-12)	B	3rd
OTHER ELECTIVES		End	Adv
0075	AP Seminar (9-12)		✓
LEADERSHIP		End	Adv
0065	Leadworthy (sem) (9-12) (Speech Component)		
NON-CREDIT COURSES		End	Adv
0020	Study Hall (sem or year) (9-12)		
HEALTH		End	Adv
0505	Health Education (sem) (9-12)		
8093	Principles of Health Science (9-12)	P	
FINE ARTS		End	Adv
741	Theater Arts (9-12)	A	
752	Theater Production (9-12)	A	
745	Technical Theater (9-12)	A	
7511	Art I (9-12)	A	
757	Ceramics I, II (10-12)	A	
755	Drawing I, II (10-12)	A	
756	Painting I, II (10-12)	A	
758	Sculpture I, II (10-12)	A	
761	Dance (9-12)	A	
770	Dance Team Training (9-12)	A	
771	Dance Team (9-12)	A	
780	Dance Color Guard (spr or year) (9-12)	A	
2005	Digital Arts & Animation (Fine Art Credit) (9-12)	BA	✓

SCIENCE		End	Adv
0411	Biology (9-12)		
0471	Biology KAP (9-12)		
0472	Biology KAP/GT (9-12)		
SOCIAL STUDIES		End	Adv
0341	World Geography (9-12)		
0353	World Geography KAP (9-12)		
0347	AP Human Geography (9-12)		✓
0348	AP Human Geography GT (9-12)		✓
0301	World History (10-12)	MA	
0307	World History KAP (10-12)	MA	✓
0305	AP World History (10-12)	MA	✓
0306	AP World History GT (10-12)	MA	✓
ATHLETICS		End	Adv
510	PE Football-Boys (9-12)		
520	PE Volleyball-Girls (9-12)		
516	PE Cross Country Boys (9-12)		
526	PE Cross Country Girls (9-12)		
511	PE Basketball-Boys (9-12)		
521	PE Basketball Girls (9-12)		
545	PE Wrestling (Girls/Boys) (9-12)		
515	PE Soccer-Boys (9-12)		
525	PE Soccer Girls (9-12)		
518	PE Swimming (9-12)		
527	PE Diving (9-12)		
513	PE Baseball-Boys (9-12)		
523	PE Softball Girls (9-12)		
517	PE Golf (Boys/Girls) (9-12)		
512	PE Track-Boys (9-12)		
522	PE Track Girls (9-12)		
519	PE Tennis (9-12)		
5419	PE Student Athletic Trainer I (application required) (9-12)		
5301	PE Cheerleading I (Athletics) (9-12)		
PHYSICAL EDUCATION SUBSTITUTIONS		End	Adv
7051	PE Marching Band I (fall only) (9-12)		
5501	PE Dance Team I (1st year only) (9-12)		
5505	PE Dance I (1st year only) (9-12)		
5506	PE Dance Team Training (1st year only) (9-12)		
7811	PE Color Guard I (fall only) (9-12)		
5301	PE Cheerleading I (1st year) (9-12)		
5105	PE NJROTC 1 Naval Science (MCHS)		
5410	PE Off-Campus (application required) (9-12)		

COURSE OFFERINGS FOR CURRENT 8TH GRADERS ATTENDING JORDAN HIGH SCHOOL





Jordan High School Course Selection Meeting
2024 - 2025 School Year

SchoolLinks

-Done:

Student Name:

Student ID:

Grade:

Students will enter their 2024-2025 course requests through SchoolLinks Course Planner January 19th - January 31st, 2024.

Choose courses carefully. You are making a commitment to your courses for the entire year.

FOUNDATION HIGH SCHOOL PLAN WITH ENDORSEMENT

Please circle your Endorsement:

Arts & Humanities

Business & Industry

Multidisciplinary Studies

Public Service

Science, Technology, Engineering & Math (STEM)

Course Requests

Circle the Course you are Requesting

English		
English 1 0101Z		English 1 KAP 0141Z
Science		
Biology 0411Z		Biology KAP 0471Z
Math		
Algebra 1 0211Z	Geometry 0223Z	Geometry KAP 0251Z
History		
World Geography 0341Z	World Geography KAP 0353Z	AP Human Geography 0347

Elective Requests

If choosing a .5 credit course, select an additional .5 credit course for 2nd semester

Course #	Course	Course #	Course

Alternate electives in order of preference
(must list 3):



Elective Requests

If choosing a .5 credit course, select an additional .5 credit course for 2nd semester

Course #	Course	Course #	Course

Alternate electives in order of preference
(must list 3):

	Course #	Course Name
1		
2		
3		

SUMMER KVS 2024 Course(s)
Course:
Course:
CBE (credit by exam):

Student Signature: _____

Signature indicates understanding that your chosen electives **cannot** be changed unless done before the verification window closes.

List of JHS Courses

<https://www.katyisd.org/Page/7607>

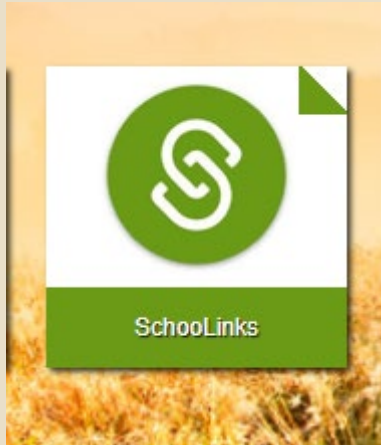


HOW DO I START COURSE SELECTION?

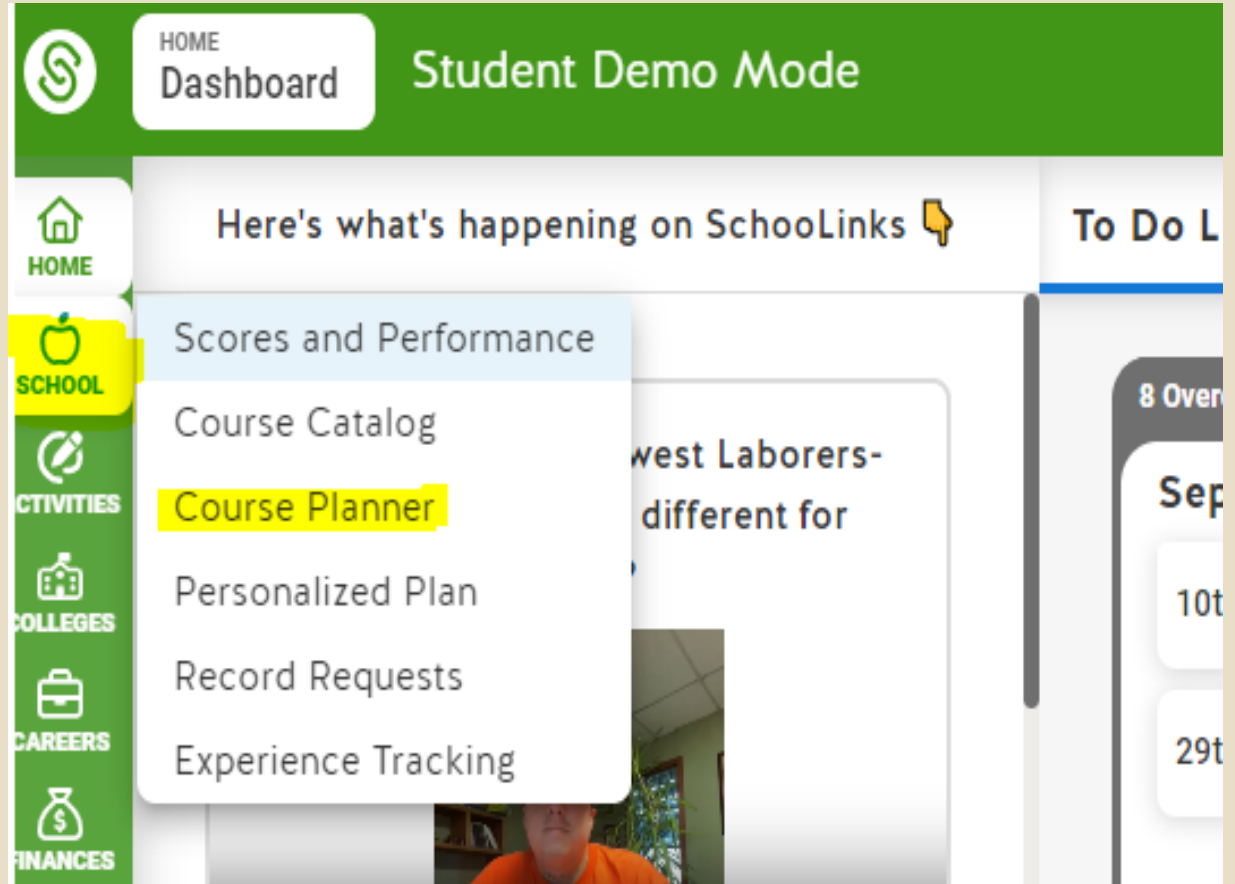
1. You will need to sign in to your MyKaty Cloud

The screenshot shows the MyKaty Cloud login interface. On the left, there is a sidebar with the title "MyKaty Cloud" and a section for "Additional Links" containing "Reset Password", "System Check", and "Change Profile Settings". Below this is an "Information" section with links for "Staff Password FAQ's", "Student Password FAQ's", and "Parent/Guardians Password FAQ's". The main content area features the Katy Independent School District logo at the top, followed by the instruction "Sign In with your District Provided ID". The login form includes a "Username" field with the value "M1300822", a "Password" field with masked characters, and a "Keep me signed in" checkbox. A red "Sign in" button is positioned below the form. At the bottom of the form, there are links for "Forgot password?", "Unlock account?", and "Help". The background of the page is a faded image of a brick building with a large window.

2. You will search for **Schoolinks** and click on the icon



3. In Schoolinks, you will click on **School** and then **Course Planner**



4. If asked, you will choose **Foundation with Endorsement** plan.



In the upcoming pages, we'll make it quick and easy to choose courses that meet graduation requirements for:

School you'll attend next year

Jordan HS

Your graduation plan

Foundations with Endorsements

At the end, you'll see and review your entire plan before submitting it.

Let's go →

5. You will be asked to pick an **Endorsement**. You will need to study these and use the course catalog. If unsure, pick **Multidisciplinary**.

Programs of Study

Description

Select a Career Focus Area to see the courses available in the Endorsement Pathway.

Program Requirement ● Not Met

Select 1 - 6 **Endorsement Pathways** from the list of options. The Endorsement Pathways selection adds requirements to the graduation plan, which determine the courses needed to graduate.

Choose from the list of Endorsement Pathways options to see your selected Endorsement Pathways here.

Law and Public Service

2 Options ✓

Manufacturing

2 Options ✓

Multidisciplinary

3 Options ✓

NJROTC

1 Options ✓

Science, Technology, Engineering, and Mathematics (STEM)

8 Options ✓

Transportation, Distribution, and Logistics

1 Options ✓

High School Students - Use Course Planner for Course Selection

The image shows a screenshot of a high school course planner interface. On the left is a sidebar with a navigation menu and a 'Let's go' button. The main area displays a grid of course categories with icons and labels. A 'Summary' button is on the right. Three green arrows point from the sidebar to the main grid, and three green arrows point from the main grid to the sidebar. A red bracket groups the '10 subjects' and 'Alternate courses' items in the sidebar.

English
English

Social Studies
Social Studies

Languages Other than English
Languages Other than English

Fine Arts
Fine Arts

Health
Health

Electives
Electives

Summary

Programs of Study
Programs of Study

Math
Math

Science
Science

Physical Education
Physical Education

Speech
Speech

Career and Technical Education (CTE)
Career and Technical Education (CTE)

Alternates
Alternates

Let's go →

Programs of Study Confirm or make changes

10 subjects Needs update

Alternate courses Closes every year


Review your plan Make any other changes here


Select a pathway that matches your future career interests. This will help you plan for an endorsement.

Choose courses for each subject including your alternate courses.

Check to make sure you have met requirements for your chosen courses.

Please use the **Course Catalog** in Schoolinks. The course catalog explains what each Endorsement and Pathway is along with courses that fulfill that chosen area.


Powered by  Schoolinks
A Modern College & Career Readiness Platform

 Katy ISD

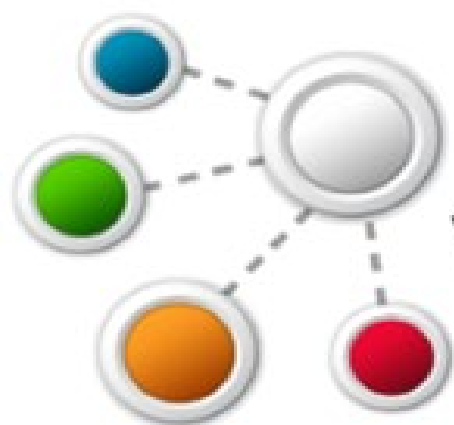
All Schools ▾

- Overview ▾
- Graduation requirements ▾
- Programs of Study ▾
- Endorsements ▾
- Course offerings ▾

Overview

 Image

- About Katy ISD >
- Student Resources >
- Endorsements Overview >
- STEM Endorsement >
- Business and Industry Endorsement >
- Public Service Endorsement >
- Arts and Humanities Endorsement >
- Multidisciplinary Endorsement >



KATY ISD VIRTUAL SCHOOL

Registration opens February 1, 2024 at 7am

For course list and registration information visit

<http://www.katyisd.org/kvs>

Summer Semester 1 May 29 – June 27

Summer Semester 2 July 2 – July 31

TIMELINE

***Course Planner will open on February 5th- February 19th. You will be able to enter Schoolinks and enter your courses. Please Choose 7 courses and 3 alternates.**

***February 20th –March 8th View only. You will meet with your counselor to discuss your courses.**

***March 18th –March 26th Course Verification. Please check to Make sure these are the courses you want to take. After this date, you will no longer be able to change your choices.**

Thursday, January 18th

Please join us at **5:30** to visit with elective teachers.

Parent meeting will start at **6:30.**

*Incoming Jordan Warriors
Course Selection Night
Fine Arts and CTE Fair*

JORDAN HIGH SCHOOL



January 18, 2024

5:30-6:30 Fine Arts CTE Fair in large cafeteria

6:30 p.m. Parent meeting in JHS PAC



**Take a picture of
the QR code.
Instant directions
that walk you step
by step through
Schoolinks course
selection.**



QUESTIONS?



- If you have questions after today, please see your 8th grade counselor.
- They will be able to answer your questions.



We look forward
to seeing you in
the Fall!